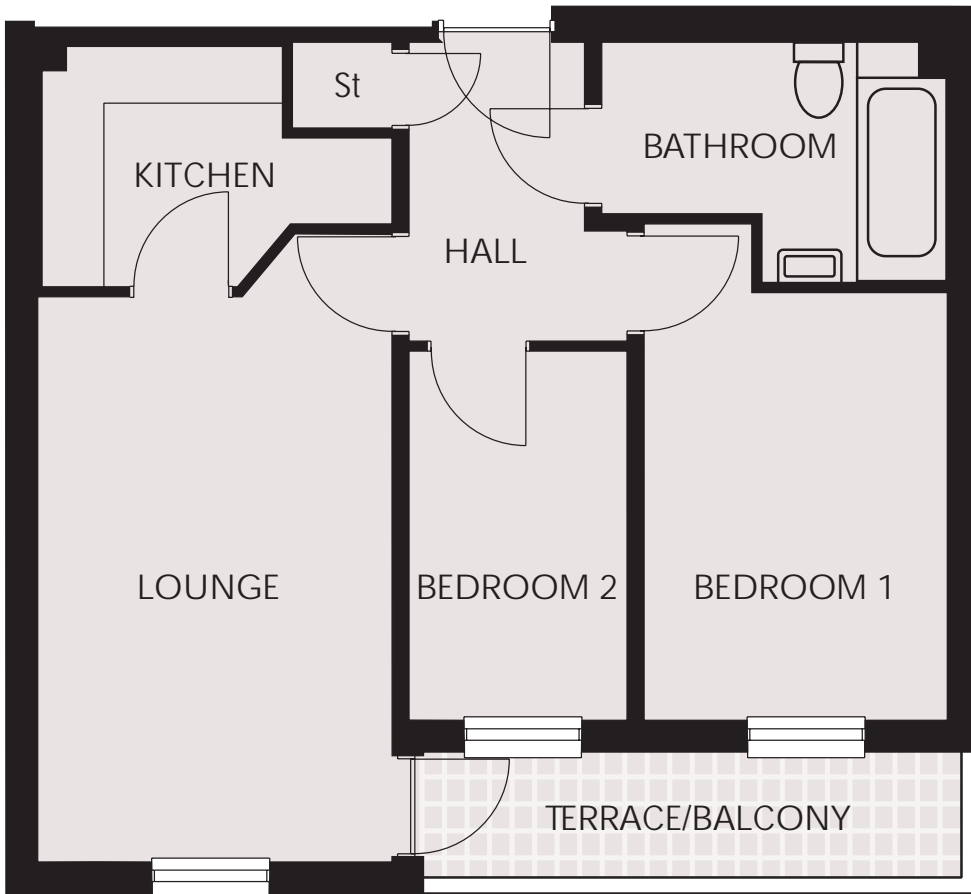


# St James' Court Gateshead

## Type A 2 bedroom apartment



## Sizes

Lounge	5449 x 2035mm (17'11" x 6'8")
Kitchen	2997 x 2050mm (9'10" x 6'9")
Bedroom 1	4299 x 2589mm (14'1" x 8'6")
Bedroom 2	3188 x 1855mm (10'6" x 6'1")
Bathroom	2959 x 2050mm (9'8" x 6'9")



William Leech 55+  
Live more

# Type A



**Persimmon House** Clasper Way, Swalwell,  
Newcastle upon Tyne NE16 3BE

**Tel:** (0191) 499 1233 **Fax:** (0191) 499 1208

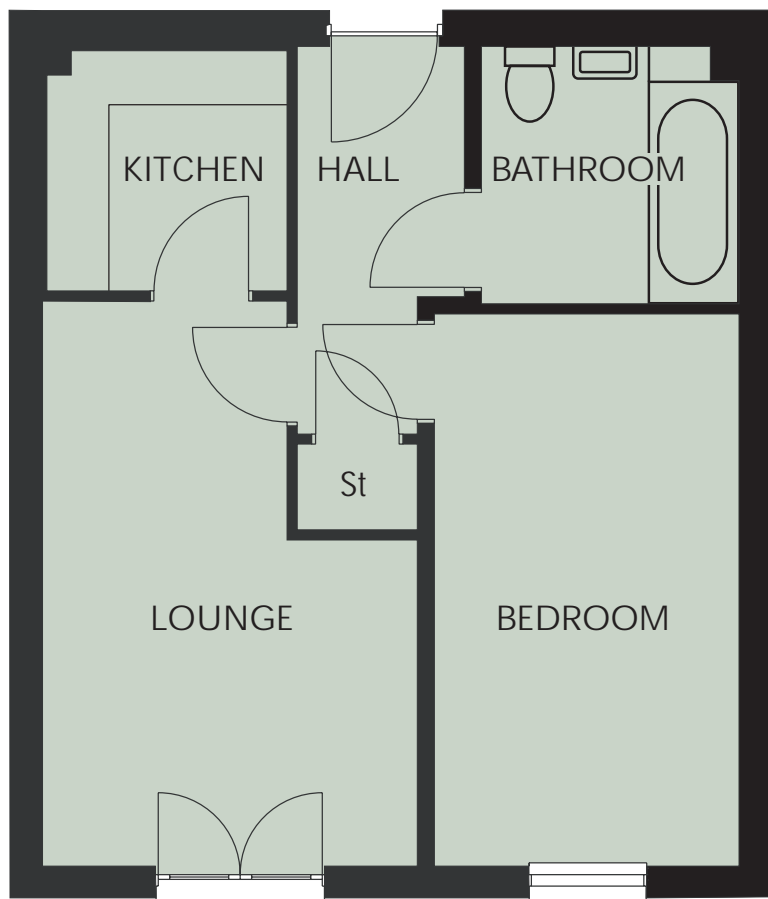
**Email:** [info@williamleech55plus.com](mailto:info@williamleech55plus.com)

**Web:** [www.williamleech55plus.com](http://www.williamleech55plus.com)

**William Leech 55+**  
Live more

# St James' Court Gateshead

## Type B 1 bedroom apartment



### Sizes

Lounge	4899 x 3215mm (16'1" x 10'7")
Kitchen	2050 x 2050mm (6'9" x 6'9")
Bedroom	4777 x 2602mm (15'8" x 8'6")
Bathroom	2200 x 2190mm (7'3" x 7'2")



William Leech 55+  
Live more

# Type B



**Persimmon House** Clasper Way, Swalwell,  
Newcastle upon Tyne NE16 3BE

**Tel:** (0191) 499 1233 **Fax:** (0191) 499 1208

**Email:** [info@williamleech55plus.com](mailto:info@williamleech55plus.com)

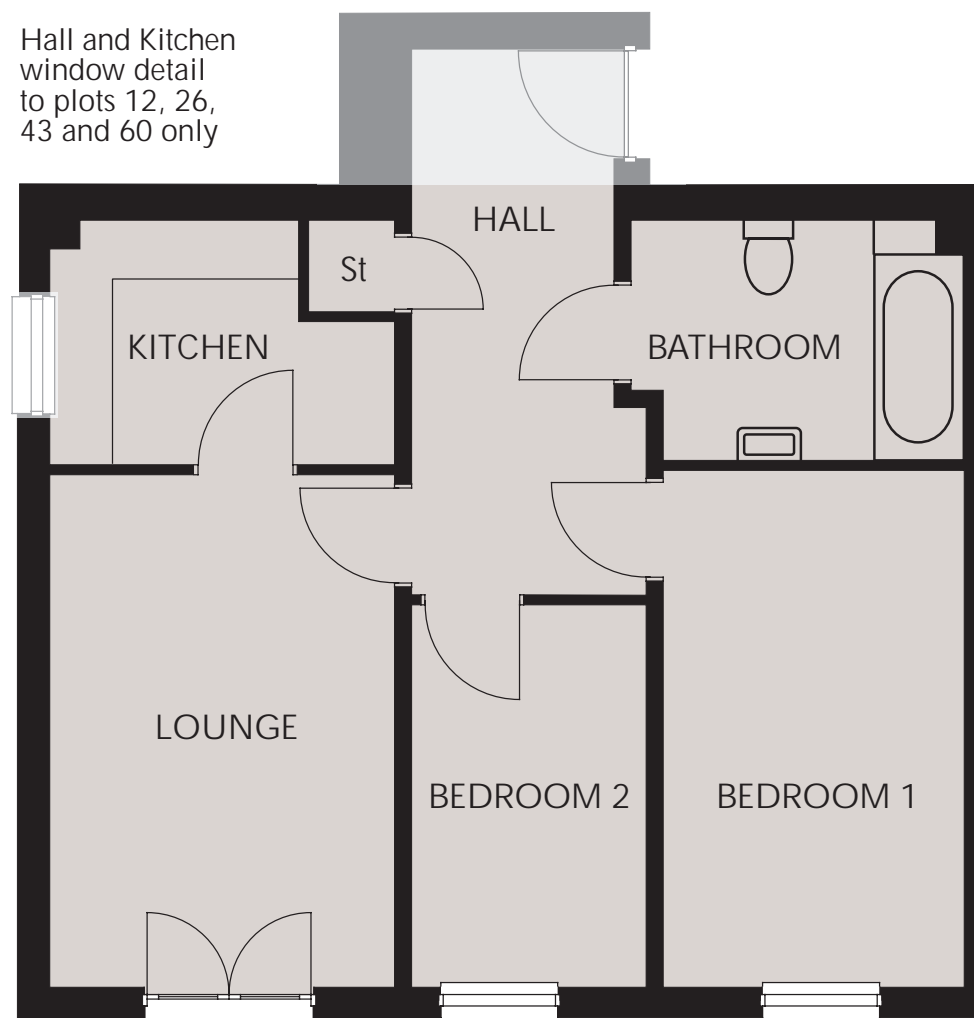
**Web:** [www.williamleech55plus.com](http://www.williamleech55plus.com)

**William Leech 55+**  
Live more

# St James' Court Gateshead

## Type C 2 bedroom apartment

Hall and Kitchen window detail to plots 12, 26, 43 and 60 only



## Sizes

Lounge	4452 x 2965mm (14'7" x 9'9")
Kitchen	2940 x 2100mm (9'8" x 6'11")
Bedroom 1	4490 x 2583mm (14'9" x 8'6")
Bedroom 2	3302 x 2025mm (10'10" x 6'8")
Bathroom	2871 x 2075mm (9'5" x 6'10")



William Leech 55+  
Live more

# Type C



**Persimmon House** Clasper Way, Swalwell,  
Newcastle upon Tyne NE16 3BE  
**Tel:** (0191) 499 1233 **Fax:** (0191) 499 1208  
**Email:** info@williamleech55plus.com  
**Web:** www.williamleech55plus.com

**William Leech 55+**  
Live more

# St James' Court Gateshead

## Type D 2 bedroom apartment



### Sizes

Lounge	4427 x 3416mm (14'6" x 11'2")
Kitchen	2240 x 2050mm (7'4" x 6'9")
Bedroom 1	5007 x 3222mm (16'5" x 10'7")
Bedroom 2	2782 x 2282mm (9'2" x 7'6")
Bathroom	3232 x 2070mm (10'7" x 6'9")



William Leech 55+  
Live more

# Type D



**Persimmon House** Clasper Way, Swalwell,  
Newcastle upon Tyne NE16 3BE

**Tel:** (0191) 499 1233 **Fax:** (0191) 499 1208

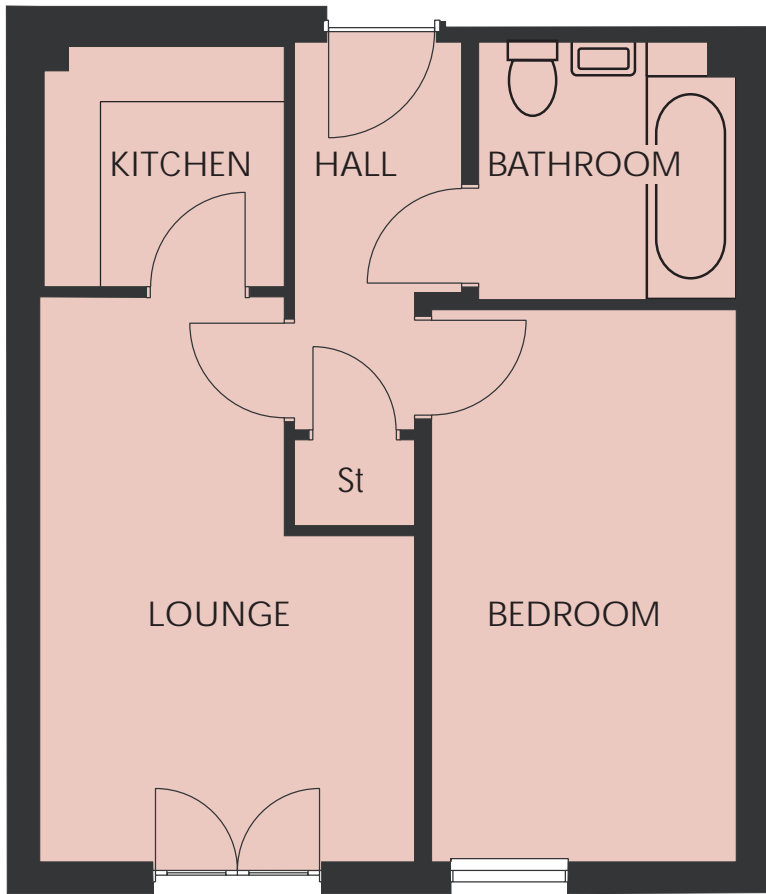
**Email:** [info@williamleech55plus.com](mailto:info@williamleech55plus.com)

**Web:** [www.williamleech55plus.com](http://www.williamleech55plus.com)

**William Leech 55+**  
Live more

# St James' Court Gateshead

## Type E 1 bedroom apartment



### Sizes

Lounge	5372 x 3674mm (17'7" x 12'1")
Kitchen	2467 x 2181mm (8'1" x 7'2")
Bedroom	5300 x 2687mm (17'5" x 8'10")
Bathroom	2294 x 2294mm (7'6" x 7'6")



William Leech 55+  
Live more

# Type E



**Persimmon House** Clasper Way, Swalwell,  
Newcastle upon Tyne NE16 3BE

**Tel:** (0191) 499 1233 **Fax:** (0191) 499 1208

**Email:** [info@williamleech55plus.com](mailto:info@williamleech55plus.com)

**Web:** [www.williamleech55plus.com](http://www.williamleech55plus.com)

**William Leech 55+**  
Live more

# St James' Court Gateshead

## Type F 1 bedroom apartment



### Sizes

Lounge	4241 x 3908mm (13'11" x 12'10")
Kitchen	3870 x 2050mm (12'8" x 6'9")
Bedroom	6942 x 5373mm (22'9" x 17'8")
Bathroom	3278 x 2826mm (10'9" x 9'3")



William Leech 55+  
Live more

# Type F



**Persimmon House** Clasper Way, Swalwell,  
Newcastle upon Tyne NE16 3BE

**Tel:** (0191) 499 1233 **Fax:** (0191) 499 1208

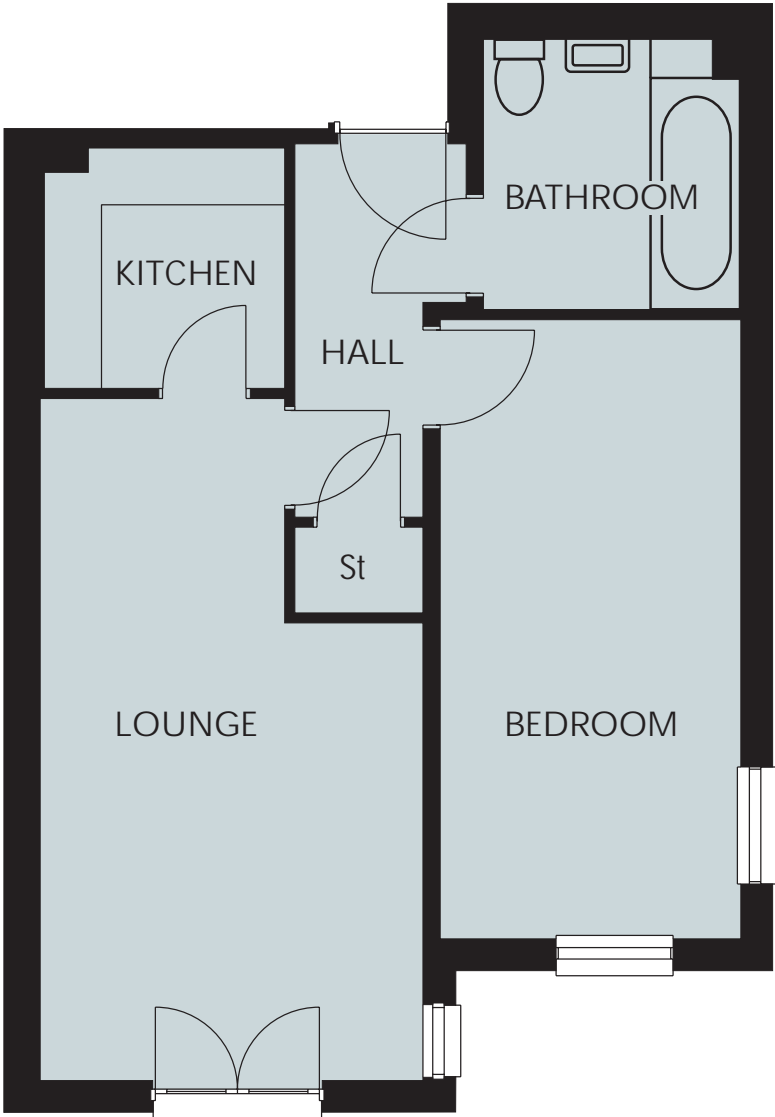
**Email:** [info@williamleech55plus.com](mailto:info@williamleech55plus.com)

**Web:** [www.williamleech55plus.com](http://www.williamleech55plus.com)

**William Leech 55+**  
Live more

# St James' Court Gateshead

## Type G 1 bedroom apartment



### Sizes

Lounge	4590 x 3286mm (15'1" x 10'9")
Kitchen	2050 x 2050mm (6'9" x 6'9")
Bedroom	5372 x 2580mm (17'7" x 8'6")
Bathroom	2312 x 2190mm (7'7" x 7'2")



William Leech 55+  
Live more

# Type G



**Persimmon House** Clasper Way, Swalwell,  
Newcastle upon Tyne NE16 3BE

**Tel:** (0191) 499 1233 **Fax:** (0191) 499 1208

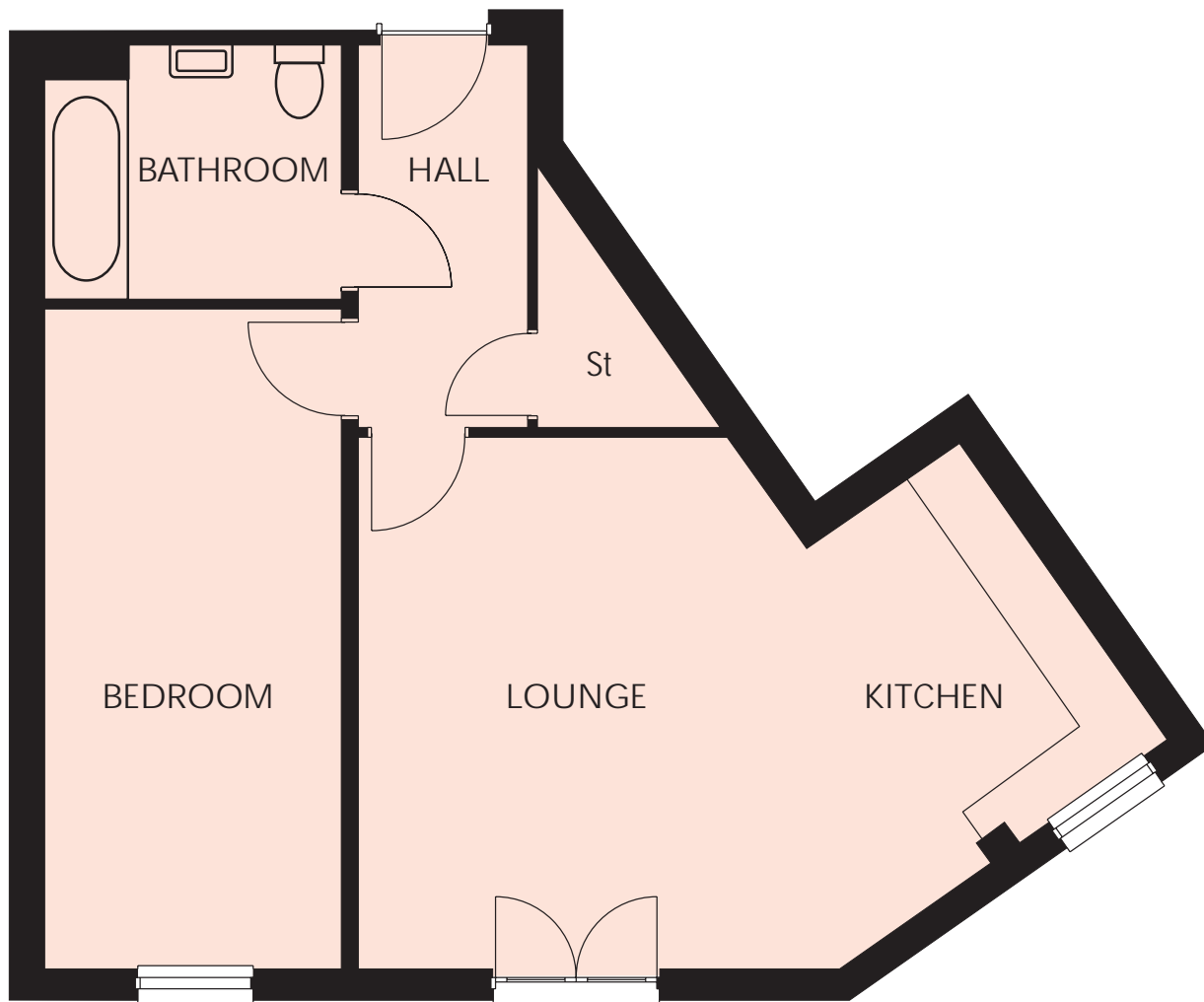
**Email:** [info@williamleech55plus.com](mailto:info@williamleech55plus.com)

**Web:** [www.williamleech55plus.com](http://www.williamleech55plus.com)

**William Leech 55+**  
Live more

# St James' Court Gateshead

## Type H 1 bedroom apartment



### Sizes

Kitchen/Lounge 7109 x 4652mm (23'4" x 15'3")

Bedroom 5809 x 2570mm (19'1" x 8'5")

Bathroom 2570 x 2200mm (8'5" x 7'3")



William Leech 55+  
Live more

# Type H



**Persimmon House** Clasper Way, Swalwell,  
Newcastle upon Tyne NE16 3BE

**Tel:** (0191) 499 1233 **Fax:** (0191) 499 1208

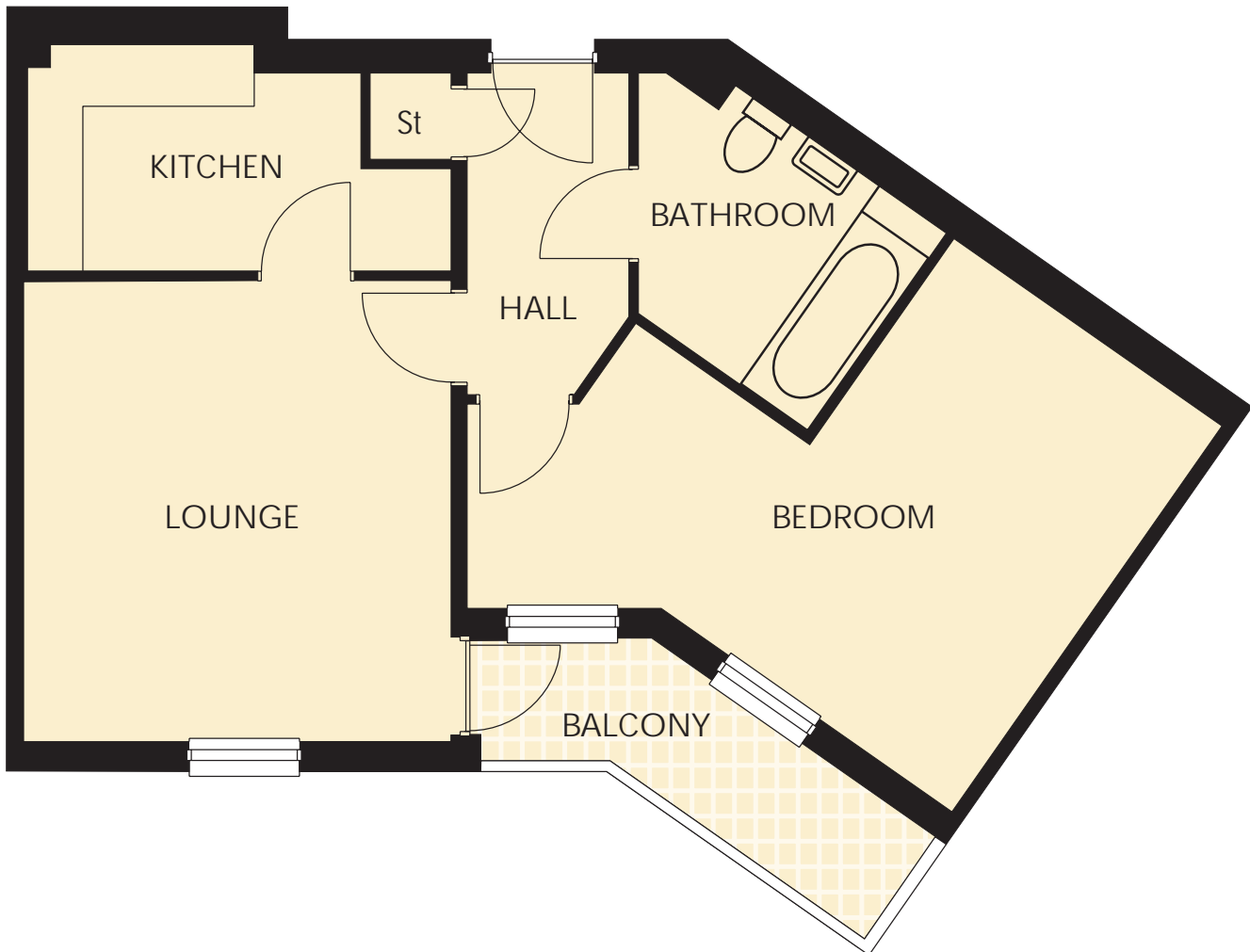
**Email:** [info@williamleech55plus.com](mailto:info@williamleech55plus.com)

**Web:** [www.williamleech55plus.com](http://www.williamleech55plus.com)

**William Leech 55+**  
Live more

# St James' Court Gateshead

## Type J 1 bedroom apartment



### Sizes

Lounge	4241 x 3908mm (13'11" x 12'10")
Kitchen	3870 x 2050mm (12'8" x 6'9")
Bedroom	6942 x 5373mm (22'9" x 17'8")
Bathroom	3278 x 2826mm (10'9" x 9'3")



William Leech **55+**  
Live more

# Type J



**Persimmon House** Clasper Way, Swalwell,  
Newcastle upon Tyne NE16 3BE

**Tel:** (0191) 499 1233 **Fax:** (0191) 499 1208

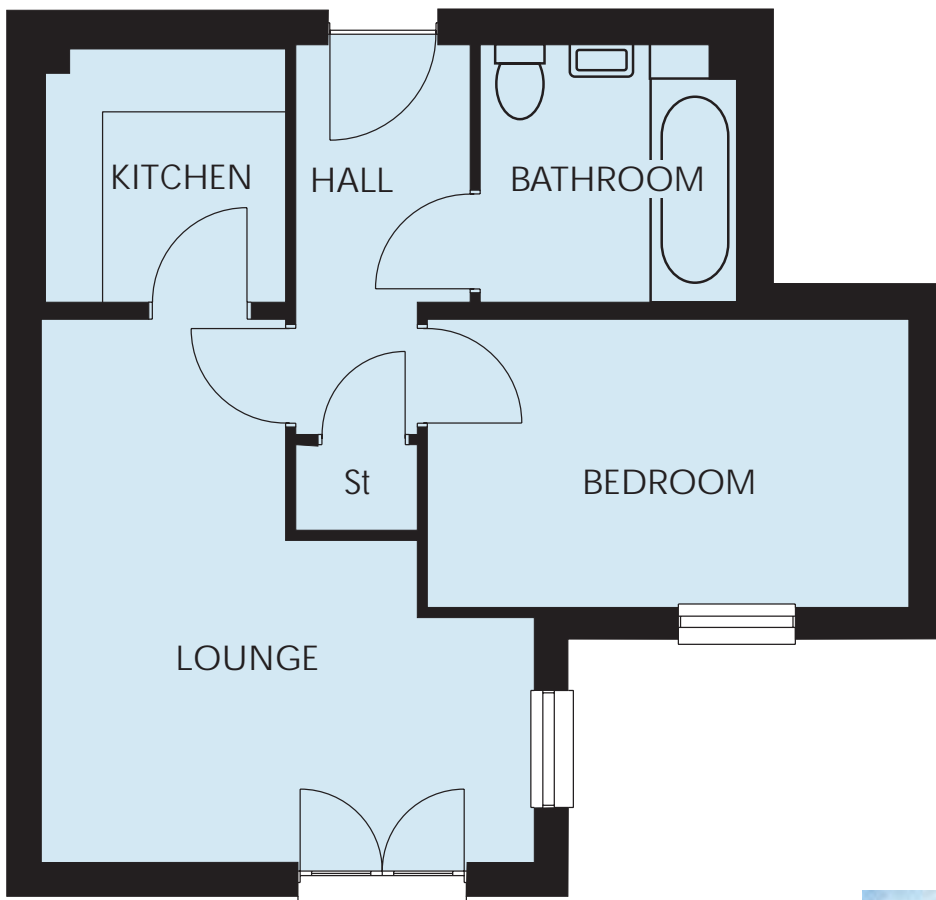
**Email:** [info@williamleech55plus.com](mailto:info@williamleech55plus.com)

**Web:** [www.williamleech55plus.com](http://www.williamleech55plus.com)

**William Leech 55+**  
Live more

# St James' Court Gateshead

## Type K 1 bedroom apartment



### Sizes

Lounge	5921 x 4261mm (19'5" x 14'0")
Kitchen	2152 x 2050mm (7'1" x 6'9")
Bedroom	4158 x 2469mm (13'8" x 8'1")
Bathroom	2200 x 2200mm (7'3" x 7'3")



William Leech 55+  
Live more

# Type K



**Persimmon House** Clasper Way, Swalwell,  
Newcastle upon Tyne NE16 3BE

**Tel:** (0191) 499 1233 **Fax:** (0191) 499 1208

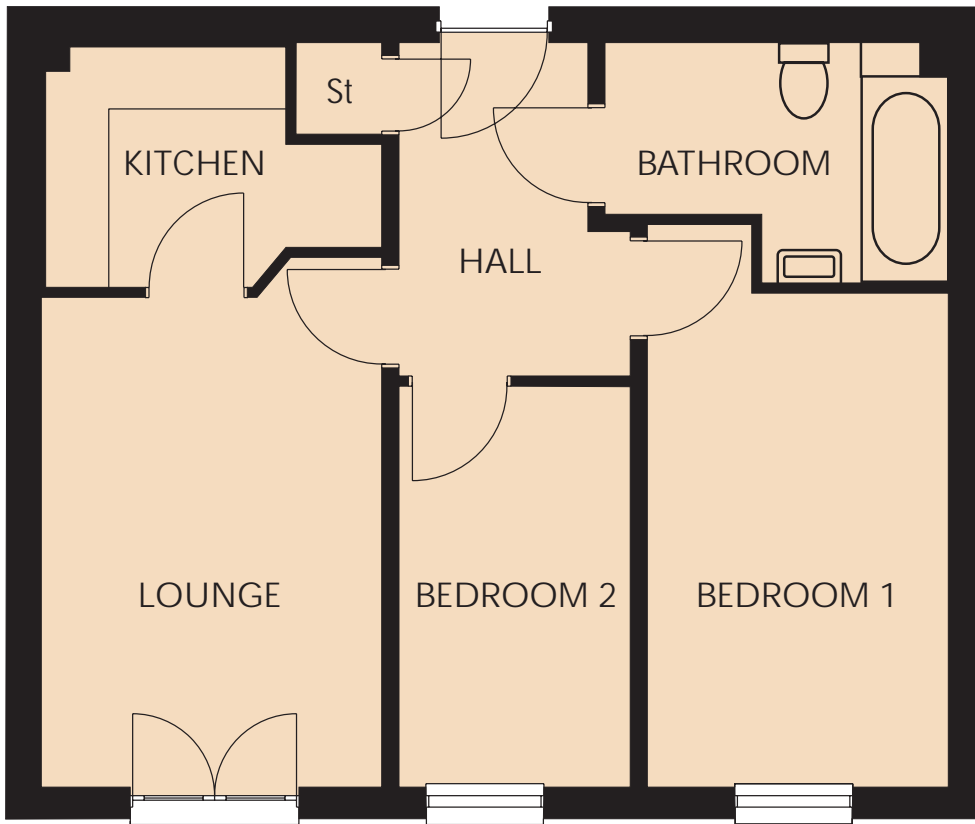
**Email:** [info@williamleech55plus.com](mailto:info@williamleech55plus.com)

**Web:** [www.williamleech55plus.com](http://www.williamleech55plus.com)

**William Leech 55+**  
Live more

# St James' Court Gateshead

## Type L 2 bedroom apartment



### Sizes

Lounge	4590 x 2916mm (15'1" x 9'7")
Kitchen	2878 x 2050mm (9'5" x 6'9")
Bedroom 1	4878 x 2570mm (16'0" x 8'5")
Bedroom 2	3465 x 1973mm (11'4" x 6'6")
Bathroom	2940 x 2050mm (9'8" x 6'9")



William Leech 55+  
Live more

# Type L



**Persimmon House** Clasper Way, Swalwell,  
Newcastle upon Tyne NE16 3BE

**Tel:** (0191) 499 1233 **Fax:** (0191) 499 1208

**Email:** [info@williamleech55plus.com](mailto:info@williamleech55plus.com)

**Web:** [www.williamleech55plus.com](http://www.williamleech55plus.com)

**William Leech 55+**  
Live more